



NORGES BILSPORTFORBUND

HOMOLOGERINGSdokument COMER 365

Homologeringsnr.
NBF-06/M/14

Utgave 01/2010

Produsent	COMER S.P.A	
Merke	COMER	
Modell	365 TAG	
Homologeringsperiode	1. Januar 2010 - 31. Desember 2014	8 Sider (+1)



Manufacturer	COMER S.p.A.	
Make	COMER	
Model	365 TAG	
Inlet type		
Number of pages		

PICTURE OF ENGINE

(insert picture of front/left here)



(insert picture of back/right here)



Importer	
----------	--



TECHNICAL INFORMATION

A	CHARACTERISTICS	
	Measurement	Tolerances
Volume of cylinder	125cc. max	
Original bore	54.02 mm	
Theoretical maximum bore	54.27 mm	
Stroke	54.00	+/- 0.05
Cooling system	Water	
Number of carburation systems	1	
Number of transfer ports / ducts, cylinder / sump	3	
Number of exhaust ports / ducts	1+n°2 boosters	
Shape of the combustion chamber		
Length between axes of the connecting rod	102 mm	+/- 0.03 mm
Minimum weight of connecting rod	112 gr	+/- 2%
Volume of combustion chamber	11.0 c.c.	minimum
Squish	0.90 mm	minimum

B	OPENING ANGLES	
Exhaust		
Of exhaust ports / ducts		

C	LIST OF ACCESSORIES INCLUDED	
<i>(List accessories as shown below)</i>	<i>Centrifugal clutch</i>	
<i>Carburetor with butterfly Ø24 MIK COMER</i>		
<i>Electric starter</i>		
<i>Exhaust with flex</i>		

D	MATERIAL
Cylinder	ALLUMINIUM
Connecting rod	STEEL
Crankshaft	STEEL
Head	ALLUMINIUM
Liner	CAST IRON
Crankcase	ALLUMINIUM
Piston	ALLUMINIUM
Piston Ring	CAST IRON CROMED

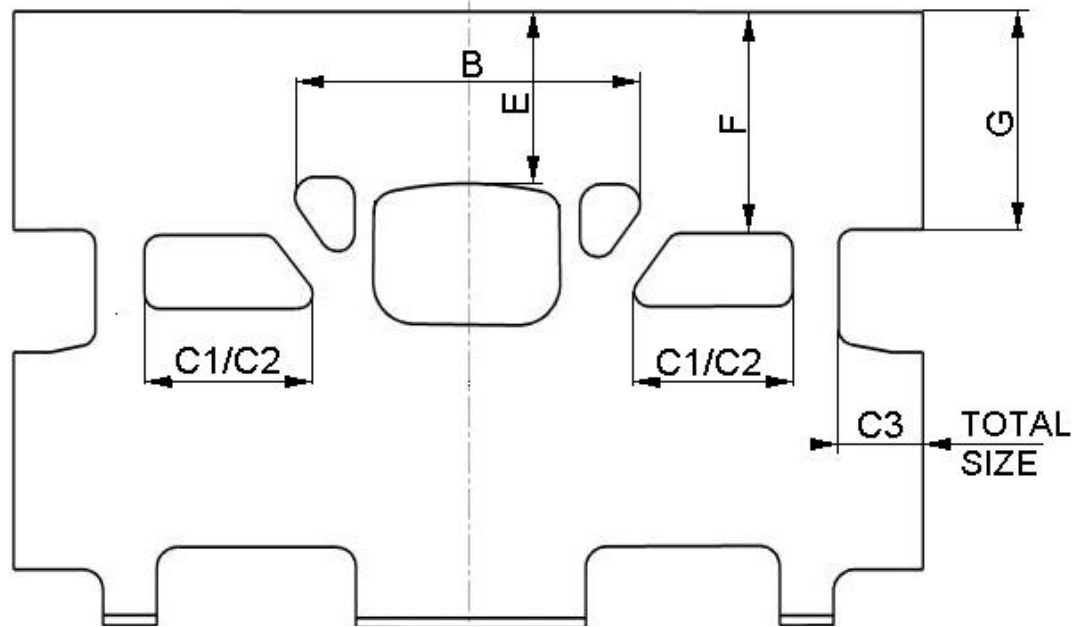


DRAWING OF THE CYLINDER DEVELOPMENT

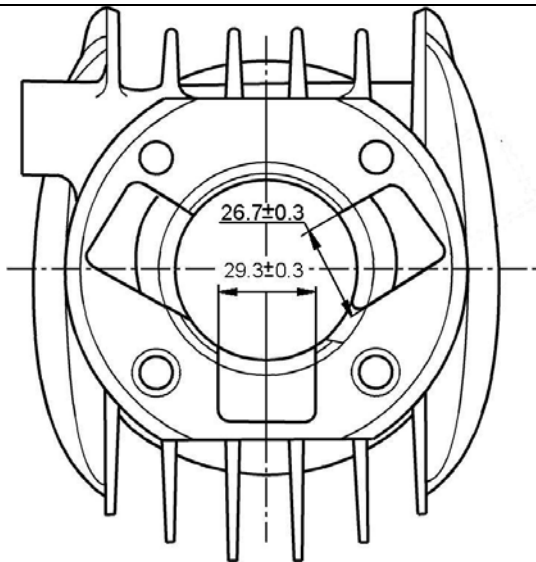
(Insert drawing here)

Chord reading	
B	51.9 ±0.3mm
C1=C2	26.8±0.3mm
C3	28±0.3 mm

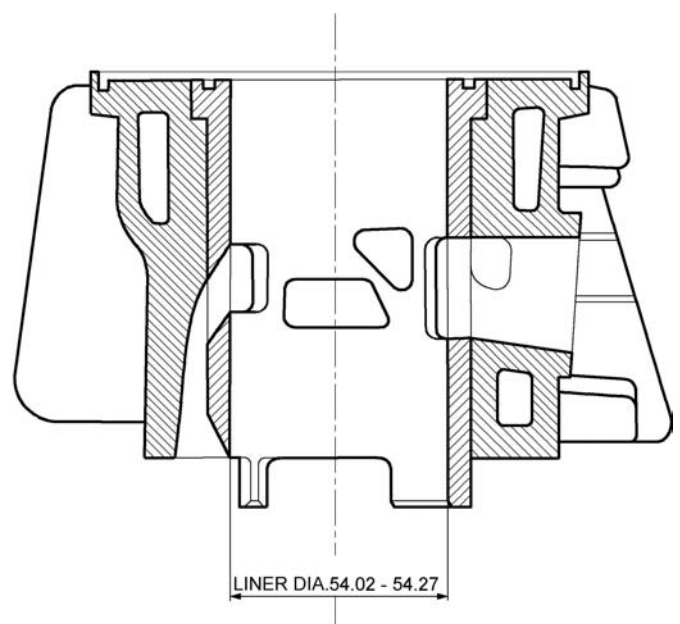
Angular reading by inserting a 0.2mm gauge	
E	176°±2°
F	126°±2°
G	132°±2°



DRAWING OF THE CYLINDER BASE



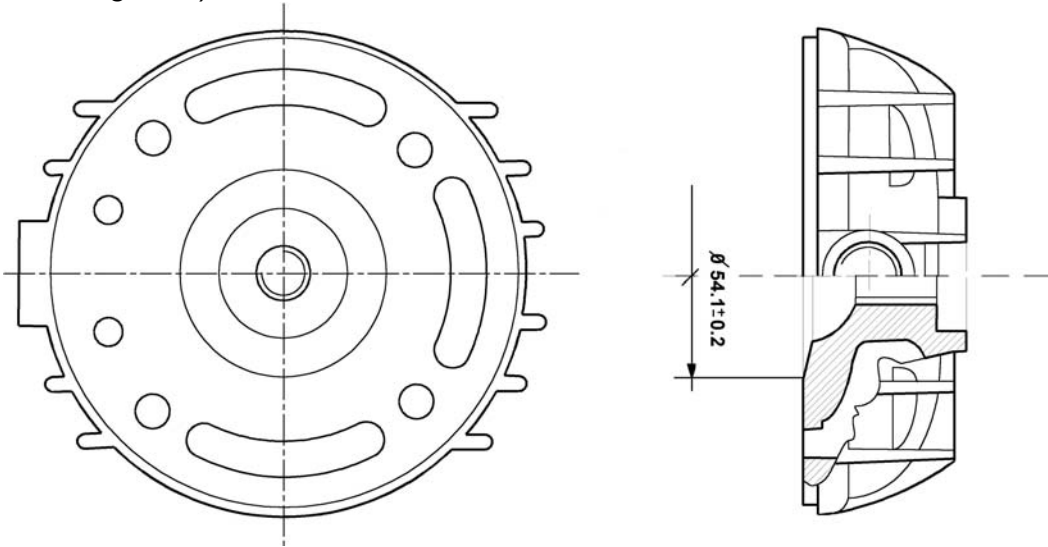
CYLINDER SECTION VIEW





DRAWING OF THE CYLINDER HEAD AND THE COMBUSTION CHAMBER

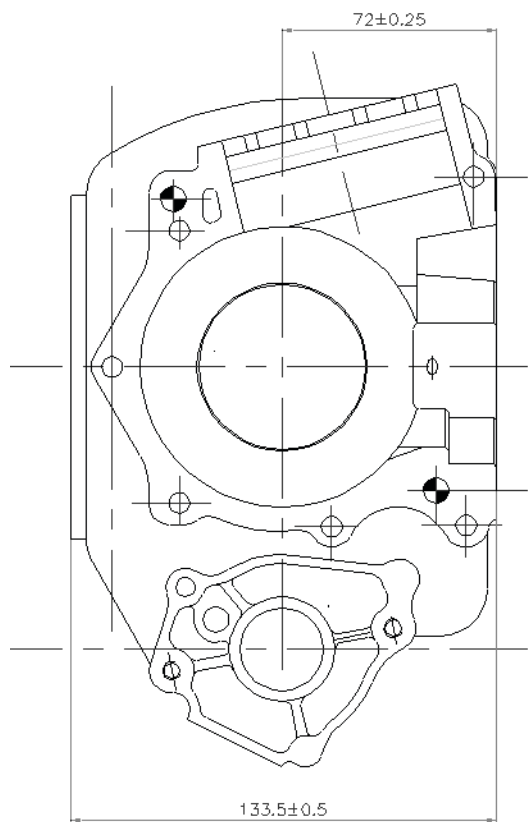
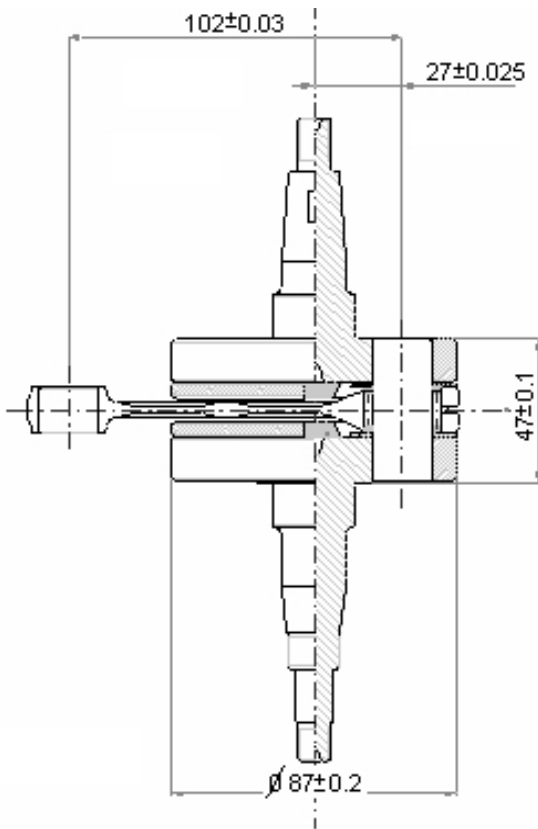
(Insert drawing here)



Combustion chamber volume = 12.5 c.c. minimum



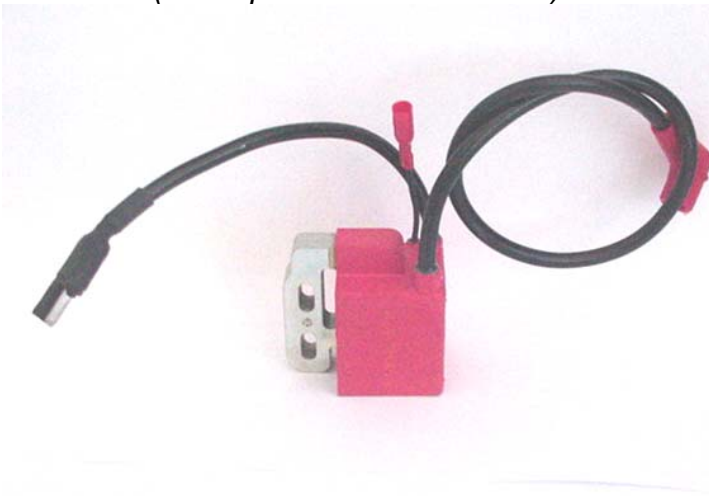
DRAWING OF THE CRANKSHAFT

DRAWING OF THE INSIDE OF SUMP



Complete weight = 1984 gr. Tolerance = $\pm 5\%$

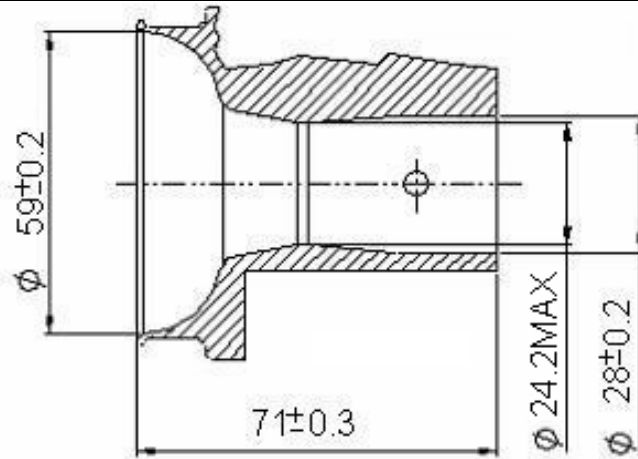


IGNITION	
Manufacturer :SELETTRA	
Model Number P3356E	
Rotation	
Description	
PHOTO OF IGNITION <i>(insert photo of inside here)</i>	PHOTO OF COIL <i>(Insert photo here)</i>
	
<i>(insert photo of outside here)</i> 	

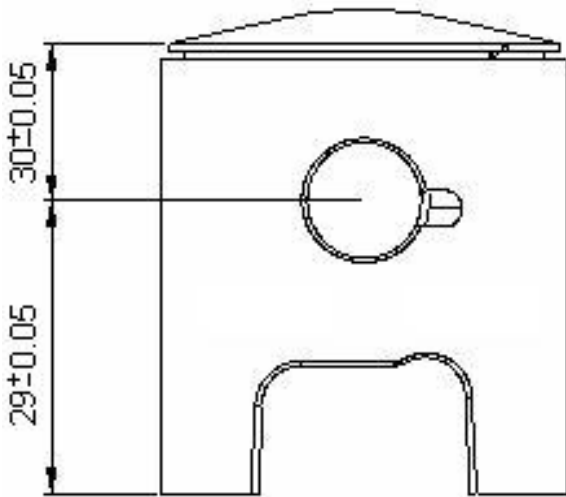


CARBURETOR DIMENSION

Item	Measure	Tolerance
A		
B		
C		
D		
E		
F		

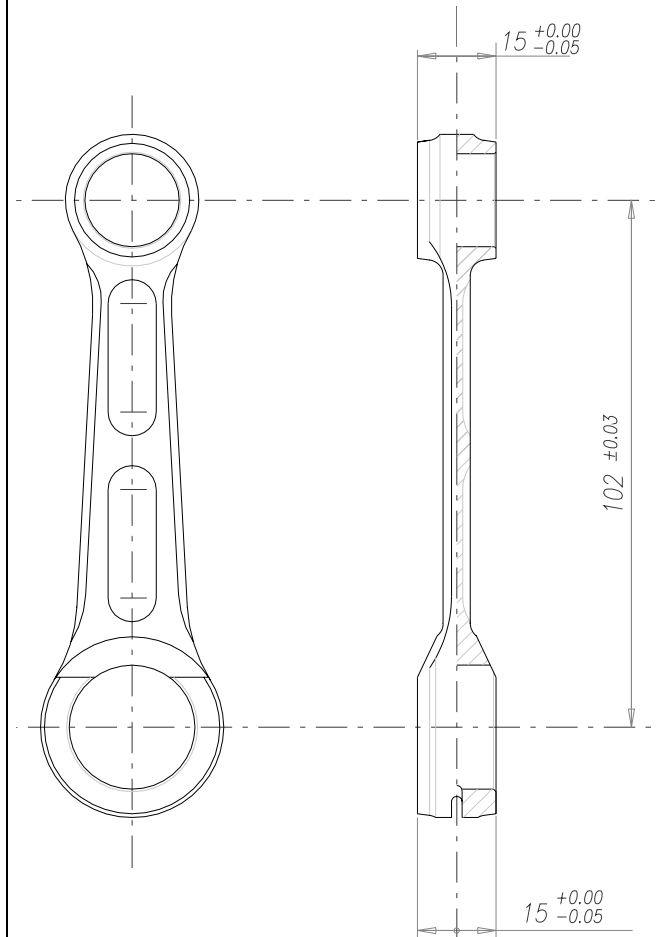


PISTON



Weight=117gr. Tolerance= ± 5 gr.

CONNECTING ROD

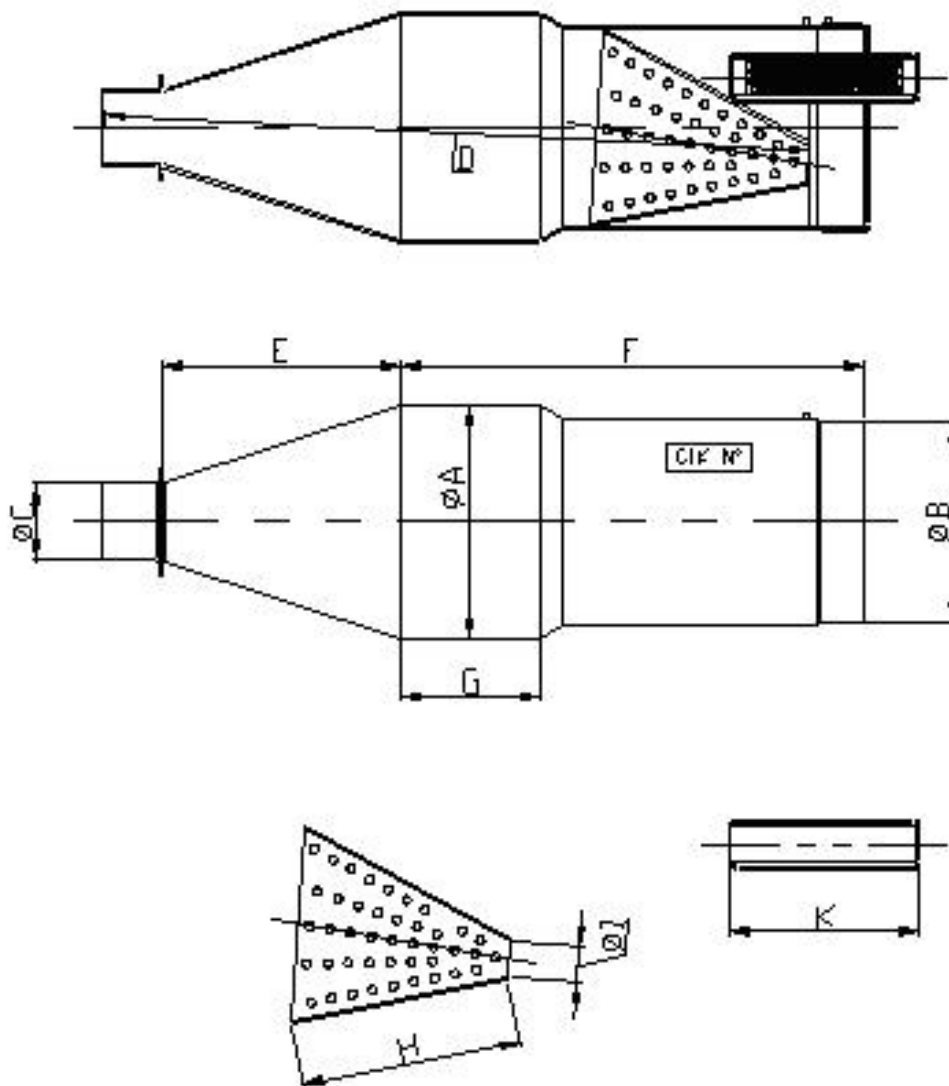


Weight= 112 gr. Tolerance= $\pm 2\%$



DRAWING OF THE SILENCER AND IT'S COMPONENTS

(Insert drawing here)



The end parts of the silencer must have two soldered pairs of lugs (one pair at the top and one pair at the bottom) to allow for fixing of seals by the Organizer so that the silencer may be opened during the competition

Measurements:

- A: 110 mm \varnothing ext. ± 3 mm
- B: 100 mm \varnothing ext. ± 3 mm
- C: 54 mm \varnothing ext. ± 1.5 mm
- D: 485 mm. ± 3 mm
- E: 172 mm. ± 3 mm
- F: 319 mm. ± 3 mm
- G: 100 mm . ± 3 mm
- H: 172 mm. ± 3 mm
- I: 22 mm ± 1 mm
- J:
- K: 130 mm . ± 3 mm



DRAWING OF THE CLUTCH

Item	Weight	Tolerance
A	157 gr.	± 10 gr.
B	473 gr.	± 15 gr.
C	260 gr.	± 10 gr.

